

## TS-673A + QSW-1105-5T Bundle Pack



**Brand:** QNAP

**Product Code:** TS-673A + QSW-1105-5T  
Bundle Pack

**Availability:** 10

**Weight:** 0.00kg

**Dimensions:** 0.00cm x 0.00cm x 0.00cm

**Call for Price:**

### Short Description

QNAP TS-673A 6-Bay AMD Ryzen Quad-Core 2.5GbE NAS with QSW-1105-5T 5-Port 2.5GbE Unmanaged Switch

### Description

#### Bye-bye Gigabit, hello 2.5GbE.

Gigabit Ethernet isn't fast enough to unleash your 2.5G LAN and WAN devices.  
Upgrade to a 2.5G switch now!

#### ISPs offer Multi-Gig internet for homes

Many ISPs have started delivering multi-gigabit fiber to the home (FTTH) customers, providing speeds exceeding that of standard gigabit ethernet.

#### Multi-Gig enables Wi-Fi 6

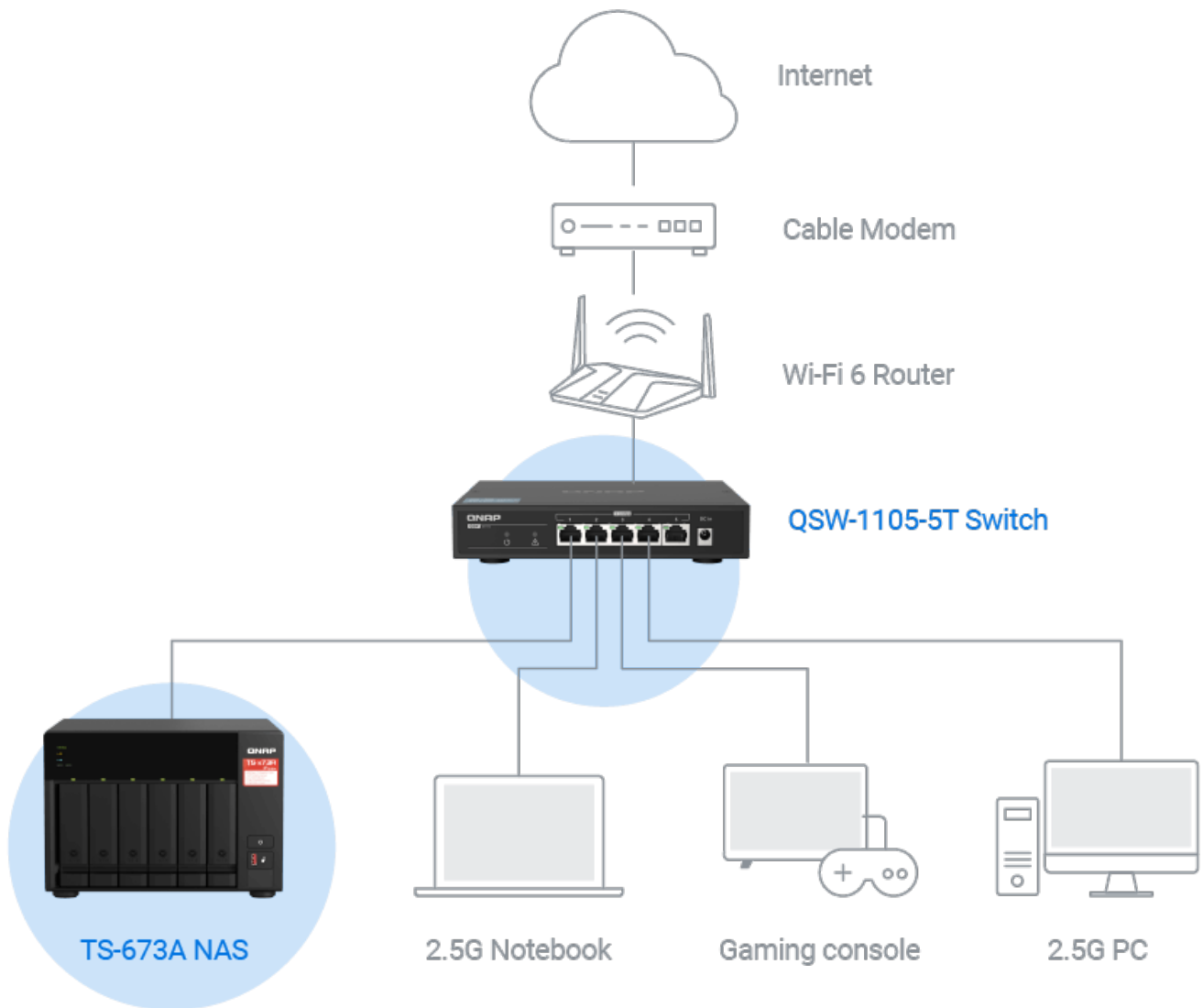
Wi-Fi 6 (802.11ax) routers or APs require multi-gig network devices to unleash optimal wireless performance.

### **PC / laptops adopt 2.5G ports**

Modern PCs and laptops have adopted 2.5G ports to fulfill high-bandwidth demands of streaming, video calls, gaming, and other modern web services.

### **Make your work and life smooth with the high-speed Switch and NAS**

QNAP helps you upgrade to a high-speed network and data storage center in your home or office, providing a full 2.5G network experience.



**Flash sale! QNAP's most cost-effective 2.5GbE solution**

**Why 2.5G? Cost-effective high-speed option.**

If you can't budget a 10GbE upgrade at this time, the more affordable 2.5GbE provides a notable improvement in current Ethernet speeds. Use existing CAT5e cables to upgrade 2.5GbE network without stretching your budget.

## **Why QNAP 2.5G solution? More cost-effective solution.**

The lack of consumer-grade switches has made it hard for home and personal users to adopt 2.5GbE/5GbE networking. QNAP now offers cost-effective 2.5GbE switches, helping you to transform your home network at a wallet-friendly price.

## **Why now? The most cost-effective timing.**

QNAP now hosts a flash sale for the 2.5GbE NAS and Switch Bundle. Buy now!



# **TS-673A**

## **AMD Ryzen™ Quad-core multi-tasking 2.5GbE NAS**

TS-673A not only provides a secure and reliable storage solution for backing up all your files, but also supports running multiple VMs and containers for diverse applications.

Two 2.5GbE ports can be combined for bandwidth for up to 5Gbps!

Multi-tasking AMD Ryzen™ 4-core/8-thread 2.2 GHz processor

8GB RAM, supports up to 64GB RAM (ECC memory also supported)

Add more 2.5G/10G ports via PCIe network cards

Supports entry-level graphics cards to boost performance for video transcoding or VM output

Install two M.2 NVMe SSD (sold separately) for faster data accessing or image recognition

Three USB 3.2 Gen 2 (10Gbps) ports and one USB 3.2 Gen 1 (5Gbps) port allow faster backup to/from USB devices

Add an additional twenty-four hard drives by connecting to multiple storage expansion units

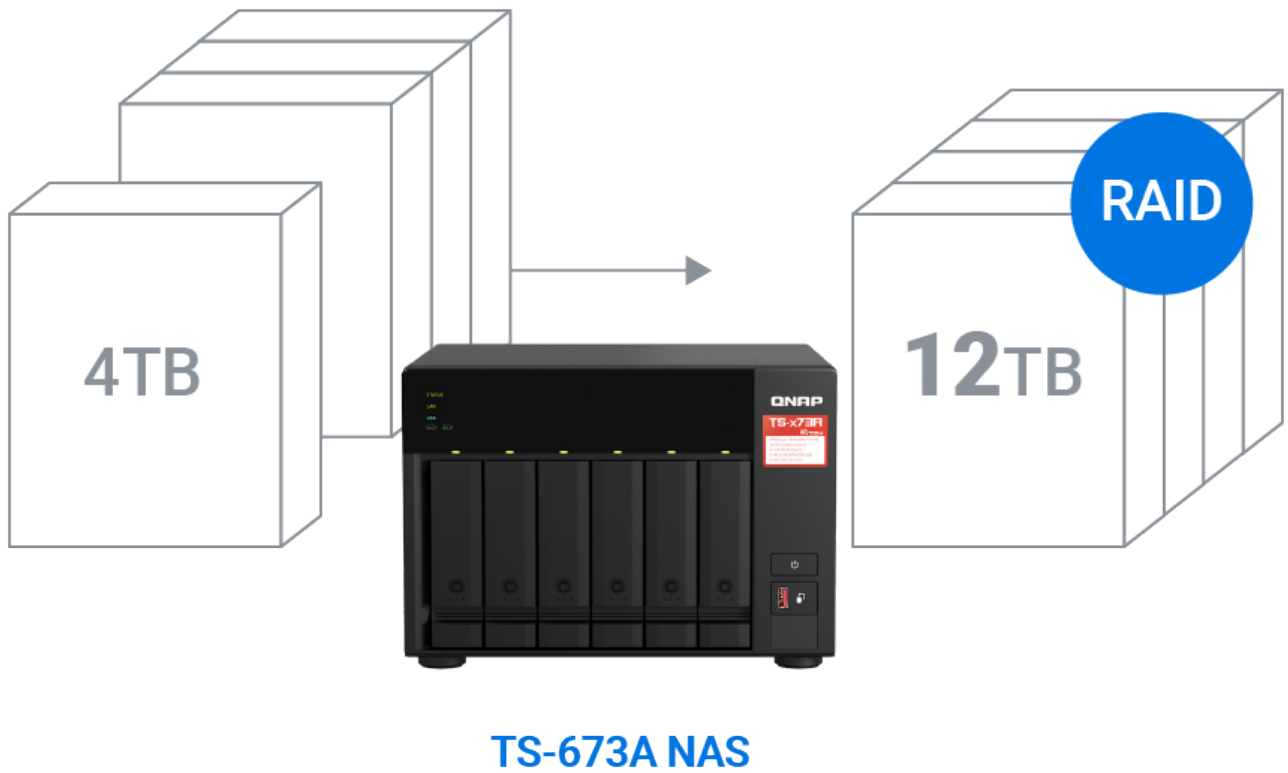
## **Smart storage • Simple backup • Easy management**

TS-673A helps you easily back up, search, share and manage all your files and data.  
Super!

### **Storage protection**

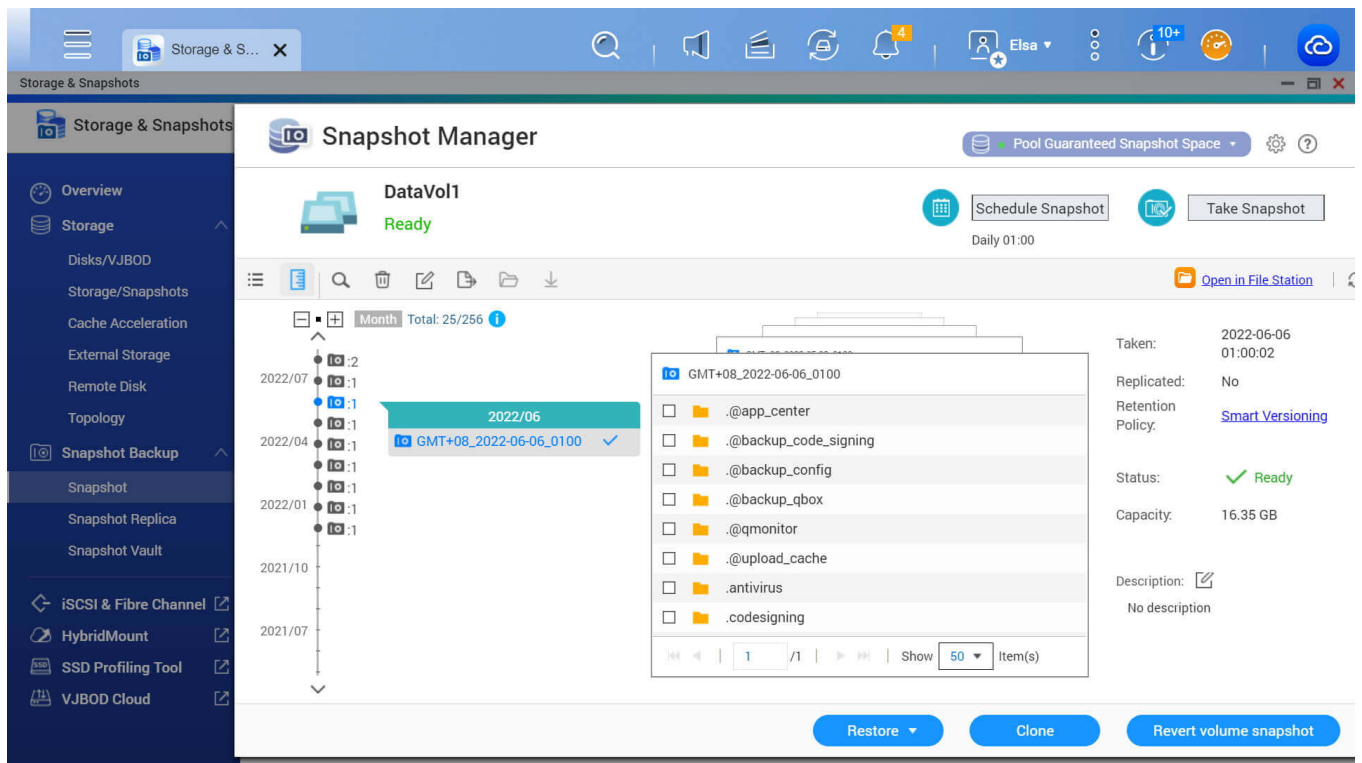
#### **RAID protection**

QNAP NAS supports various [RAID types](#) that provide varying levels of performance and data redundancy.



### **Volume and LUN snapshots**

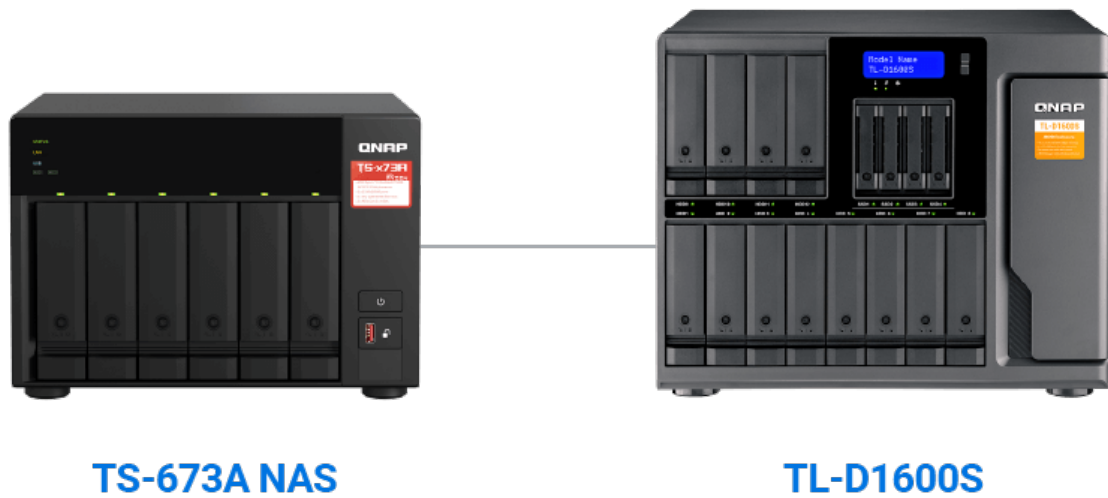
[Snapshots](#) record the complete status of your NAS system and data. Certain data and files can be reverted when needed. It's the best way to recover your files from ransomware.



## Flexibly expand storage space

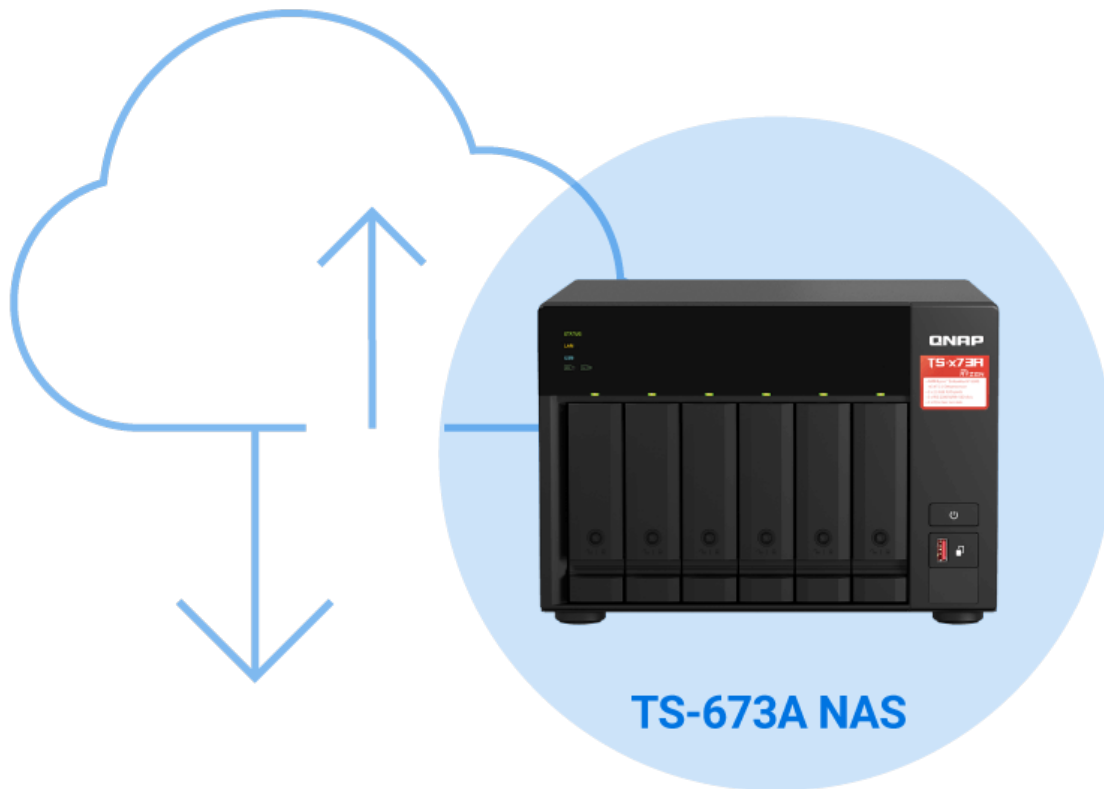
The TS-673A supports a storage capacity of up to 100 TB by installing six 3.5-inch 22 TB hard drives in RAID 5. By connecting to [QNAP storage expansion units](#), you can add additional storage space to meet growing storage requirements.





### **Mount cloud storage**

[HybridMount](#) allows you to mount cloud storage and file servers on your NAS and centrally manage file access. Local caching for cloud data can be enabled to provide near-LAN access speeds.



### Diverse backups

#### Back up devices

Easily back up from [PC/Mac](#) or File servers supporting Rsync, FTP and CIFS to NAS. Then use [Hybrid Backup Sync](#) to back up data to another remote NAS or cloud based on the 3-2-1 backup rule.



### **Back up services**

Back up diverse services to NAS, including [VMware® and Hyper-V™ VMs](#), [Google™ Workspace](#) and [Microsoft 365® business account data](#), [WordPress](#) and [Google Photos](#).



## **Back up NAS data to the Cloud**

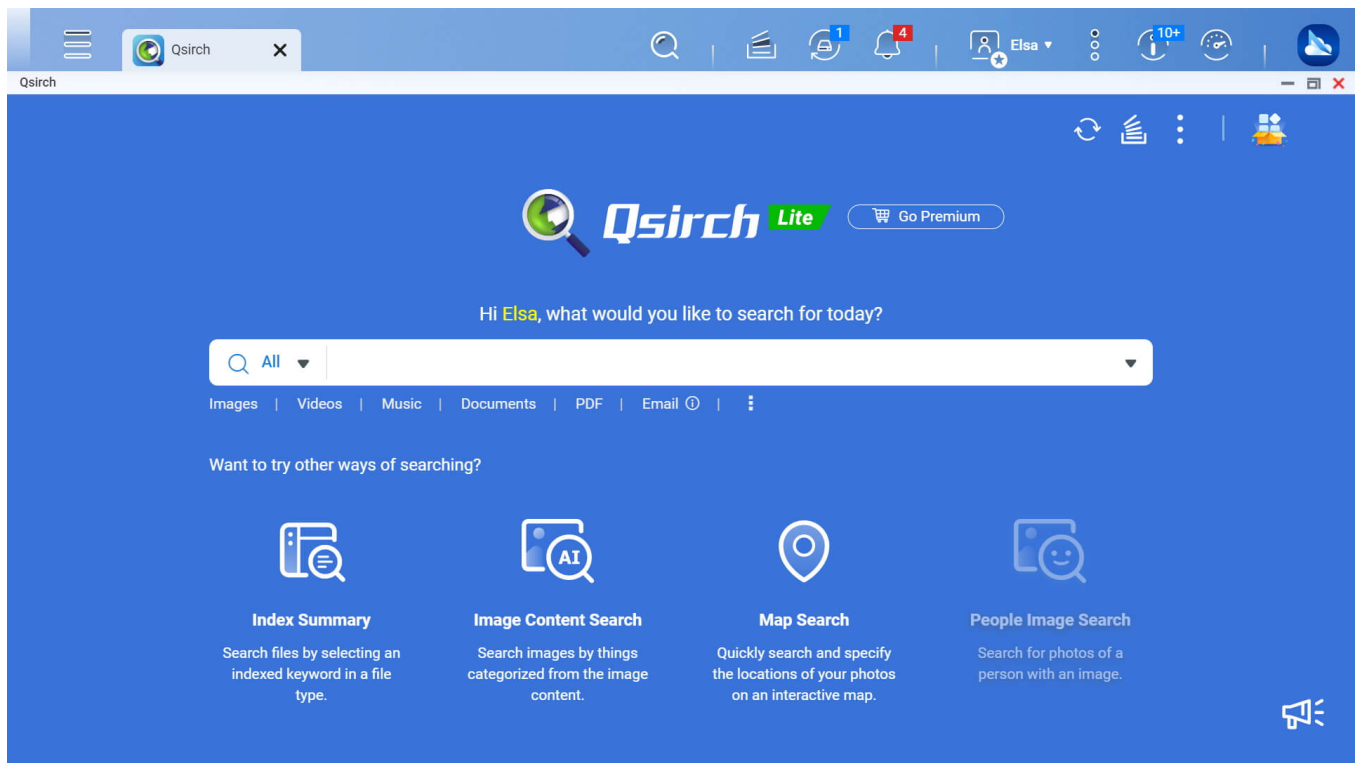
[Hybrid Backup Sync](#) supports mainstream public cloud services for backing up or syncing data from NAS to Cloud.



**Boost production efficiency**

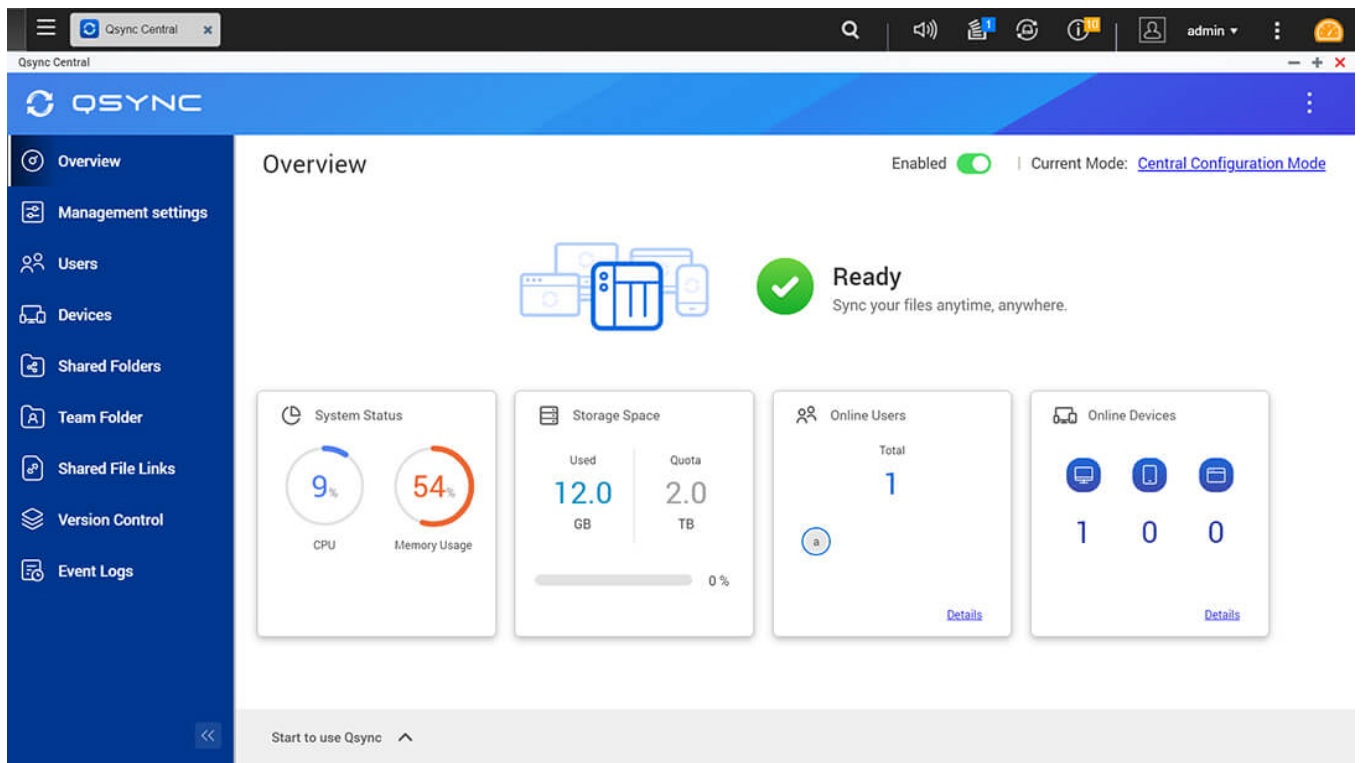
**Search NAS files quickly**

Powerful [Qsirch](#) full-text search engine allows you to quickly find documents, media files, and emails using keywords, colors, or faces. AI OCR image recognition technology recognizes and captures text inside images.



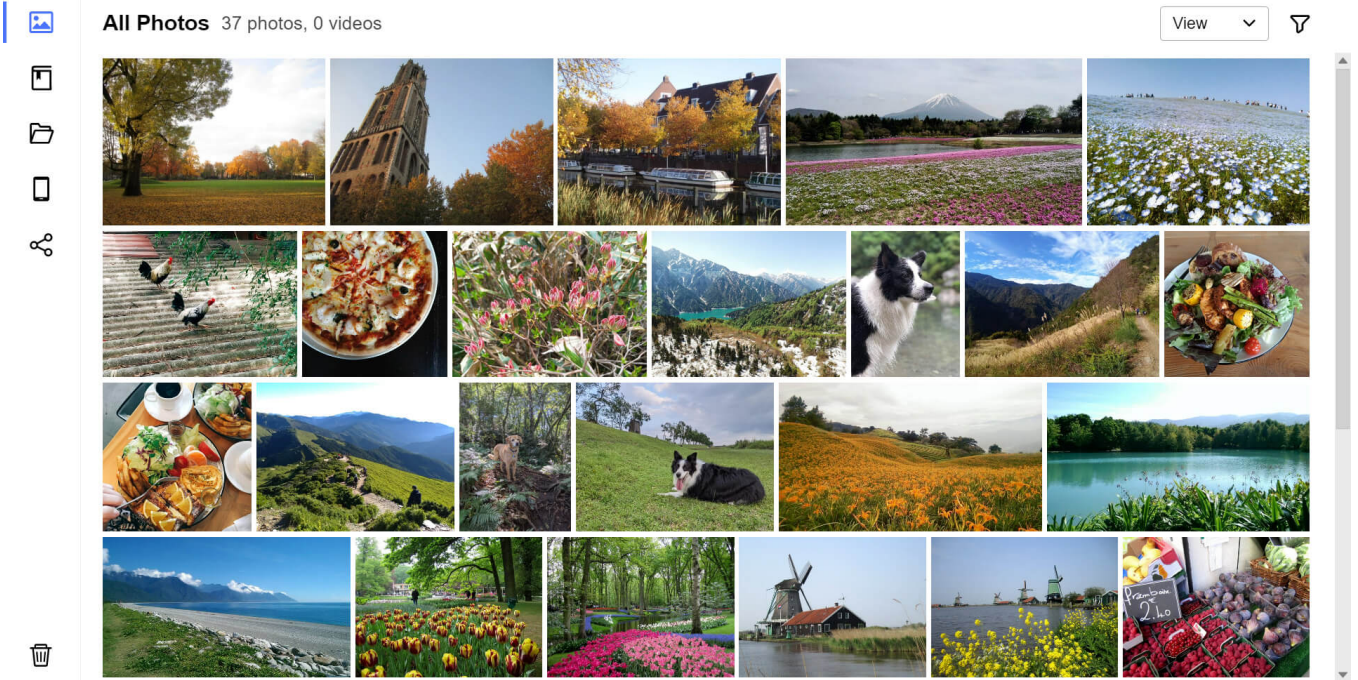
## Auto-sync files

[Qsync](#) allows you to sync files between NAS and multiple computers or mobile devices via one-way or two-way sync.



## AI photo management

Large-capacity NAS leverages the powerful AI photo management app [QuMagie](#) and creates smart photo albums based on people, objects, locations, and events, making photos easy to find and share.



## QTS 5 empowers VM, surveillance and cybersecurity deployment

The QTS 5 operating system provides a next-generation data storage usage experience with optimized user interface.

### Run VMs and containers

By running multiple virtual machines and containers on the TS-673A, you can deploy multi-tenant environments and applications to increase management efficiency and reduce hardware costs.

### Predict drive life with AI



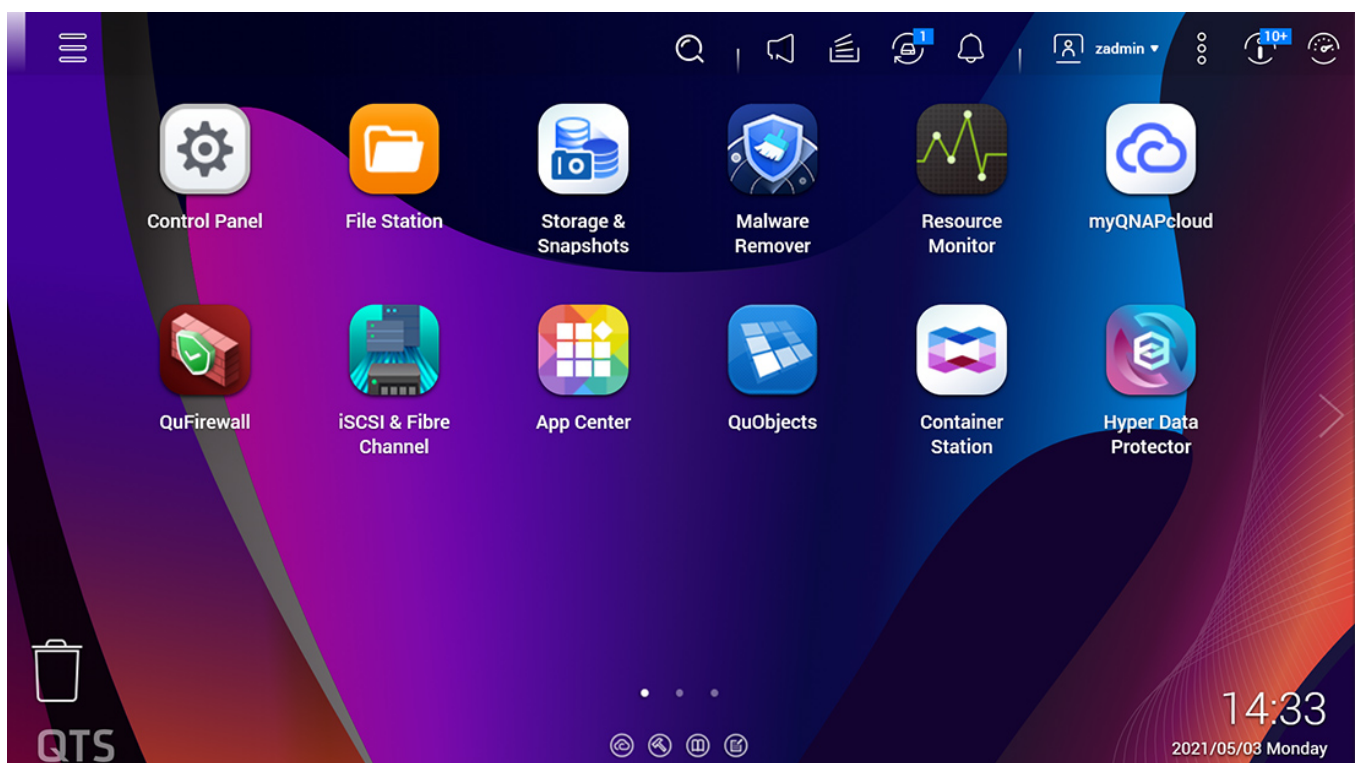
QNAP's AI-based drive health analysis technology, and automatic RAID disk replacement with spares, ensures a reliable storage environment.

## **All-in-one surveillance**

QNAP's integrated surveillance NAS solution offers a subscription licensing solution or perpetual licensing solution for flexible deployment based on your needs.

## **All-in-one surveillance**

QNAP's integrated surveillance NAS solution offers a subscription licensing solution or perpetual licensing solution for flexible deployment based on your needs.



# **QSW-1105-5T**

## **Affordable 5-port 2.5G switch**

Enjoy 2.5x high-speed transmission by connecting more 2.5G devices, such as, NAS, Wi-Fi 6 Router/AP, PC/laptop, etc.

Five 2.5G NBASE-T ports for unleashing LAN/WAN 2.5Gbps potential

Supports auto-negotiation, backward compatible with 1GbE devices

Use existing Cat 5e cables

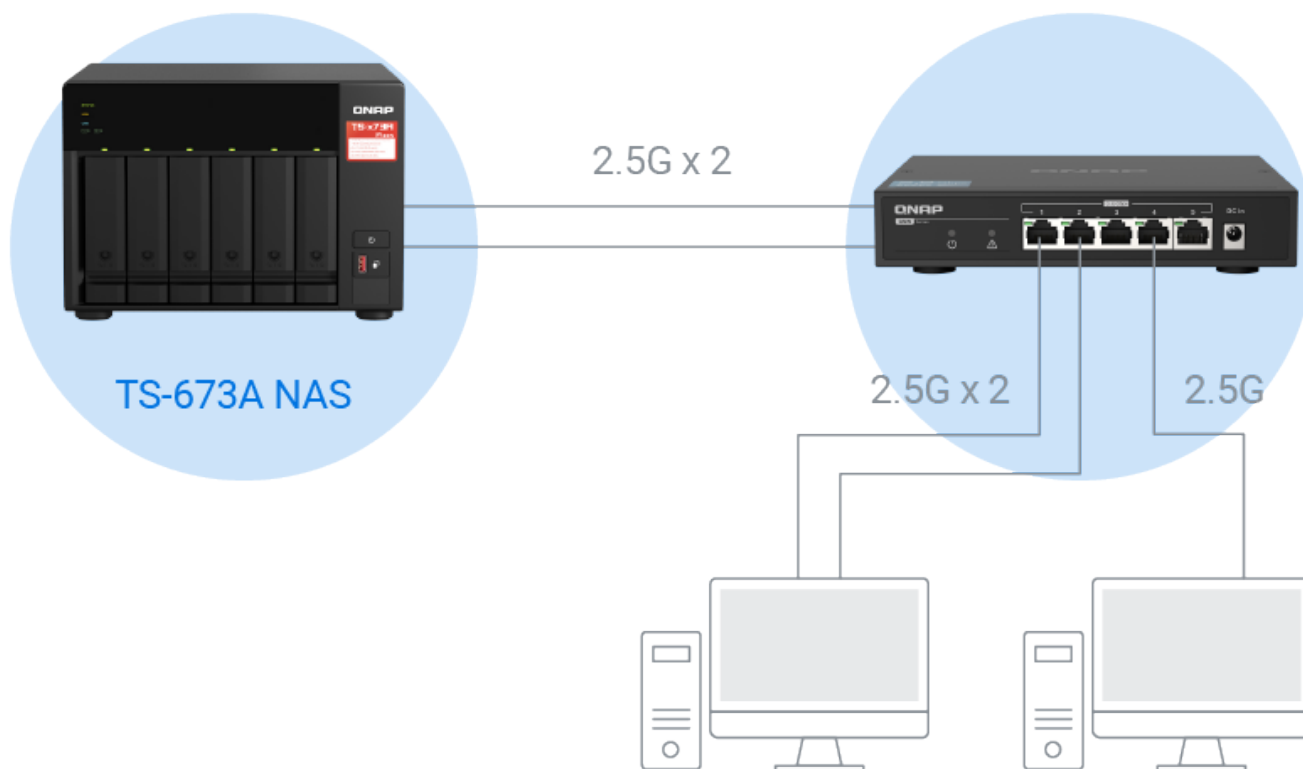
Hassle free plug and play

Fanless design with ventilated construction for near-silent operation

Automatic loop detection and blocking to ensure continuous network operation

## **Enjoy 5Gbps speeds without an extra network card**

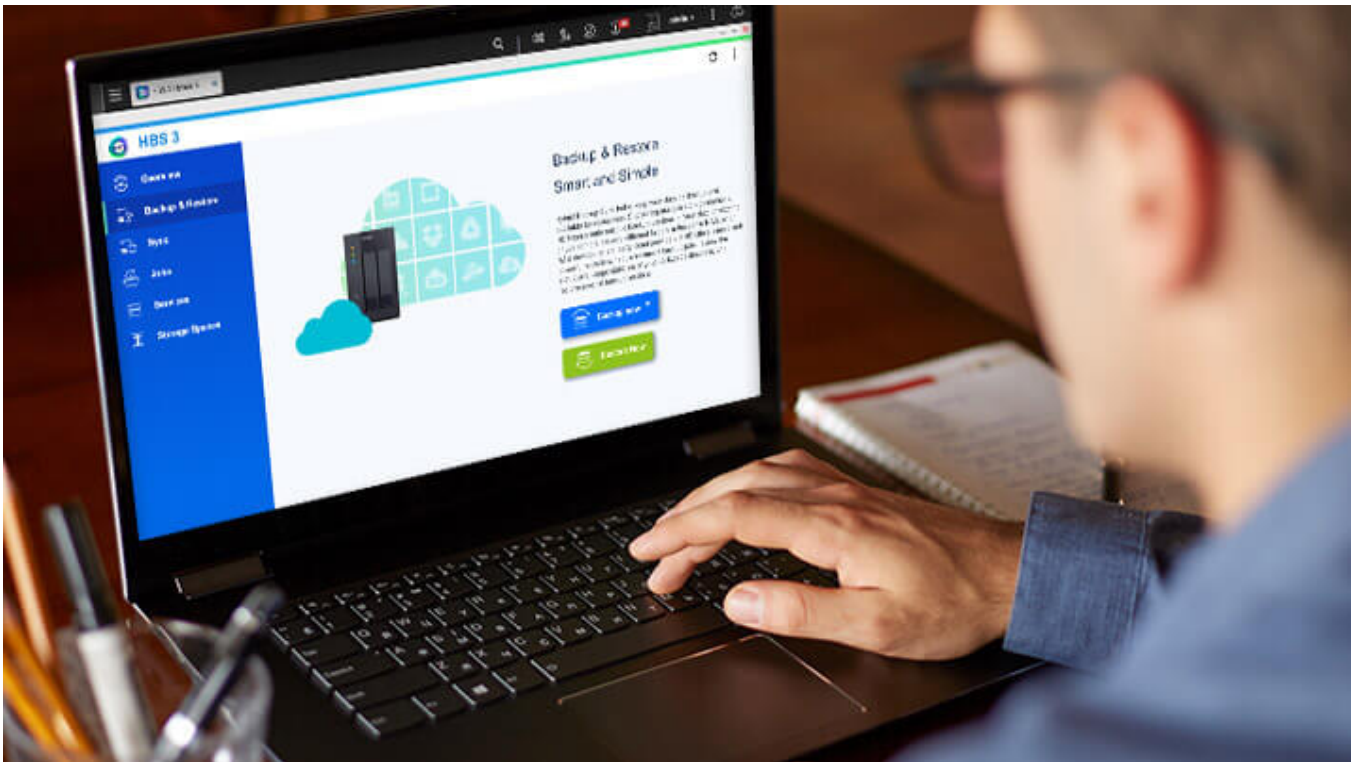
Enable SMB Multichannel on TS-673A NAS to combine two 2.5GbE ports for up to 5Gbps transmission speed. This increased bandwidth greatly accelerates large file transfer/backup and video editing applications.



## **Deploy 2.5GbE network environment to boost application efficiency**

### **Faster Backup and Restore**

Increased transfer speeds help save time when backing up files to NAS, or when backing up using [HBS \(Hybrid Backup Sync\)](#).



## **High-quality Video Streaming**

Higher bandwidth improves the playback quality of 4K/8K videos.



## **Gaming Storage**

Mount an iSCSI LUN from a 2.5GbE NAS to your computer to store your vast game collection. [Gaming x 2.5GbE NAS Solution](#)



## **Smooth Video Calls**

In the era of remote working and classes, a faster network provides high-quality live streams for video calls and online courses.





## Nas Software Specs

Operating System

Supported Client Operating Systems

QTS 5.2.3

1. Apple Mac OS 10.10 or later
2. Ubuntu 14.04, CentOS 7, RHEL 6.6, SUSE 12 or later Linux
3. IBM AIX 7, Solaris 10 or later UNIX
4. Microsoft Windows 7, 8, 10 and 11
5. Microsoft Windows Server 2008 R2, 2012, 2012 R2, 2016, 2019 and 2022

Supported Browsers

1. Apple Safari (latest version)
2. Google Chrome (latest version)
3. Microsoft Edge (latest version)
4. Mozilla Firefox (latest version)

Supported Languages

Chinese (Traditional & Simplified), Czech,

Danish, Dutch, English, Finnish, French, German, Greek, Hungarian, Italian, Japanese, Korean, Norwegian, Polish, Portuguese (Brazil), Romanian, Russian, Spanish, Swedish, Thai, and Turkish

Storage Pool	??
SED Storage Pool	??
Maximum Pool size	308 TB
Maximum number of storage pool	128
Volume Type	Thick, Thin, Static
Maximum volume size	250 TB

Note: At least 4 GB RAM is required.

Maximum number of volume	128
Maximum shared folder size	250 TB
Maximum number of shared folder	512
JBOD Expansion	??
VJBOD / VJBOD Cloud	??
iSCSI Service	??
Fibre Channel Service	??
LUN Type	Thick, Thin
File-based iSCSI LUN	??
Block-based iSCSI LUN	??
Maximum LUN size	250 TB

Note: At least 4 GB RAM is required.

Maximum number of targets LUN	128
LUN feature	<ol style="list-style-type: none"><li>1. LUN Mapping (LUN can be moved between iSCSI and FC)</li><li>2. LUN Masking</li><li>3. WWPN Aliases Import/Export</li><li>4. FC Port Group</li><li>5. FC Port Binding</li><li>6. Multipath IO (MPIO)</li><li>7. Online LUN capacity expansion</li><li>8. LUN snapshot</li><li>9. LUN snapshot replication and clone</li></ol>
Auto Tiering	??

Requires minimum 2GB memory.

RAID Type	<ol style="list-style-type: none"><li>1. 8-bay (and more): JBOD, Single, RAID 0, 1, 5, 6, 10, 50, 60</li></ol>
-----------	--



2. 6-bay: JBOD, Single, RAID 0, 1, 5, 6, 10, 50
3. 4-bay: JBOD, Single, RAID 0, 1, 5, 6, 10
4. 2-bay: JBOD, Single, RAID 0, 1

## RAID Group

??

To ensure data security, system stability, and storage performance, the maximum number of drives for a single RAID group is now 16 (applicable to RAID 5, RAID 6, RAID TP, and subgroups of RAID 50 and RAID 60). Nevertheless, users can combine multiple RAID groups into a large storage pool that contains more than 16 drives, using RAID 50, RAID 60, or RAID 10 as the RAID configuration. This enhancement will only be applied to new RAID groups. All existing RAID groups and storage systems will not be affected.

RAID Level Migration

??

RAID Expansion (by adding Disk)

??

RAID Expansion (by replacing bigger Disks)

??

Storage Pool Expansion (by adding RAID Group)

??

RAID Hot Spare

Global, Local

RAID Sync/Rebuild/Scrubbing

??

Internal drive

EXT4

External drive

EXT3, EXT4, NTFS, FAT32, HFS+, and exFAT (optional for ARM model)

Note: To use exFat in certain models you must purchase an exFAT driver license from License Center.

Disk, Enclosure Locate

??

Disk S.M.A.R.T. Scan

??

Disk S.M.A.R.T. Data Migration

??

Ironwolf Health Management

??

Secure Erase

??

SSD Trim

??

SSD Life Estimation

??

Disk Roaming	??
Disk Standby	??
Volume Snapshot	??
LUN Snapshot	??
Maximum Snapshot (Per System)	<a href="#">Check maximum number of snapshots of your NAS</a>
Maximum Snapshot (Per Volume / LUN)	<a href="#">Check maximum number of snapshots of your NAS</a>
Minimum Snapshot Interval	5 minutes
Snapshot Retention Policy	??
Self-serve Snapshot Recovery	??
Application Consisted Snapshot	??
Snapshot Full Clone	??
Snapshot Replica / Vault	??
SSD read-only Cache	??
SSD read-write cache	??
SSD write-only cache	??
SSD Cache Maximum Size	<a href="#">Check your QNAP NAS cache capacity and RAM requirements</a>
SSD Cache RAID	0, 1, 5, 6, 10
SSD profiling tool	??
External Device Management	??
Mount Smart Phone (MTP)	??
External RAID Device (QNAP so on)	??
Management (External Device Mode)	
External RAID Device (QNAP so on)	??
Management (NAS Mode)	
File Server	<ol style="list-style-type: none"> <li>1. File sharing across Windows, Mac, and Linux/UNIX</li> <li>2. Microsoft networking (CIFS/SMB)</li> <li>3. Apple networking (AFP)</li> <li>4. NFS version 3/4 services</li> </ol>
FTP Server	<ol style="list-style-type: none"> <li>1. QuFTP</li> <li>2. FTP, SFTP and TFTP protocols</li> <li>3. FTP over SSL/TLS (explicit FTPS)</li> <li>4. FXP support</li> </ol>
Maximum FTP connection	1024
File Station (Web)	??
Object Storage	??
Local user account	4,096
Local group account	512
Domain user/group account	200,000

Domain Security	??
Domain Controller	??
Shared folder permission	??
Advanced folder permission	?? , (AFP, CIFS/SMB, FTP, and File Station)
Windows ACL	?? , (CIFS/SMB)
User quota	??
Group quota	??
Folder quota	?? , (Snapshot shared folder)
Home folder	??
Resource Monitor	??
SNMP	V2, V3
Network recycle bin	<ol style="list-style-type: none"> <li>1. Recover files deleted using AFP, CIFS/SMB, and File Station</li> <li>2. Automatic cleanup and file type filter</li> </ol>
System Log & Notification Center	Log recording: 3,000 event per second
Smart Fan	??
Schedule on/off	??
Internet protocol	IPv4, IPv6
Virtual Switch	??
Port trunking	?? , (7 modes)
VLAN	??
DHCP Server	??
DDNS (Dynamic Domain Name Service)	??
Network access protection with auto-blocking	SSH, Telnet, HTTP(S), FTP, CIFS/SMB, and AFP
Security Counselor	??
Malware Remover	??
AES 256-bit Volume Encryption validated by FIPS 140-2 CAVP	??
2-step verification	??
Allow/Deny List	??
Access Protection	??
Service binding	??
Firewall	??
VMware vSphere Ready	??
Windows Server certficated	??
Citrix Ready	??
vSphere Web Client Plug-in	??
VMware vSphere VAAI for iSCSI	??
VMware vSphere VAAI for NAS	??

Windows ODX	??
Windows/VMware Snapshot Agent	??
HTTP/HTTPS Connections	TLS 1.0/1.1/1.2/1.3
Supports WebDAV Connection	??
Supports Virtual Hosts	32
Qsync	??

Note: At least 1 GB RAM is required.

[Qsync] Management Mode	User customization, Central
[Qsync] Qsync client supported platforms	Windows, macOS, Ubuntu, Android, and iOS
[Qsync] Maximum number of version control	64
HybridMount	??

Note: At least 1 GB RAM is required.

[HybridMount] File Cloud Gateway	Concurrent Connections = 20 Upload & 20 Download
[HybridMount] Network Drive Mount	??
[HybridMount] Free cloud gateway sessions	2
HBS (Hybrid Backup Sync)	??

Note: At least 1 GB RAM is required.

[HBS (Hybrid Backup Sync)] NAS to NAS backup	??
[HBS (Hybrid Backup Sync)] Cloud Backup	??
[HBS (Hybrid Backup Sync)] Cloud Sync	??
[HBS (Hybrid Backup Sync)] 2-way and Active Sync	??
[HBS (Hybrid Backup Sync)] Backup Deduplication	??
[HBS (Hybrid Backup Sync)] Apple Time Machine Backup	??
[HBS (Hybrid Backup Sync)] External drive backup	??
[HBS (Hybrid Backup Sync)] Maximum number of backup job	400
Hyper Data Protector	??
Boxafe	??

Note: At least 4 GB RAM is required.

[Boxafe] Office 365 Backup	??
----------------------------	----

[Boxafe] Google Workspace Backup	??
[Boxafe] Full-text search	??
Qsirch	??

Note: This feature is supported by all QNAP NAS devices with at least 2 GB of memory  
Photos, music, videos, PDFs, Gmail, and others

[Qsirch] Previews	
[Qsirch] Integrate Mac Finder	??
[Qsirch] Advanced picture search	??
[Qsirch] Search filters	??
QuMagie	??

Note: At least 1 GB RAM is required.

[QuMagie] Browse photos	??
[QuMagie] Virtual and smart albums	??
[QuMagie] AI-assisted photo management	People, things, places, and others
Antivirus (free)	??
McAfee (License)	??
QVPN Service	??

Note: At least 1 GB RAM is required.

[QVPN Service] Remote Access	PPTP, L2TP/IPSec, OpenVPN, WireGuard, QBelt (QNAP proprietary)
[QVPN Service] Supported utility and mobile app	Windows, macOS, iOS, and Android
[QVPN Service] Supported maximum clients	100
LDAP Server	??
RADIUS	??
SQL server	??
License Center	??
Multimedia Console	??
Photo Station	??
Music Station	??
Video Station	??
Download Station	??
Notes Station	??
Qfiling	??
Media Streaming add-on	??
QmailAgent	??
QuWAN	??

DA Driver Analyzer  
Q'center

??  
??

Note: The application is available in the App Center and in virtual appliance marketplaces (VMware vSphere ESXi and Microsoft Hyper-V).

Q'center Server  
Q'center Agent  
Connect to Q'center  
Virtualization Station

??  
??  
??  
??

[Virtualization Station] Supports Virtual machine instances

Note: At least 4 GB RAM is required. Windows, Linux, Unix, and Android

[Virtualization Station] VM importing, exporting, cloning, snapshot capturing, backup, and restoration

All function is Fine.

[Virtualization Station] Virtual switches

Can create a virtual switch

[Virtualization Station] GPU pass-through

Not support GPU

[Virtualization Station] Suggested number of virtual machine instances

8

The actual number of virtual machine instances may vary by the memory installed on NAS (e.g. 1 VM= 1 thread for 1 vCPU and 1GB memory). Please expend memory if needed.

Container Station

??

[Container Station] Supported type

Note: At least 1 GB RAM is required. LXC/LXD and Docker

Note: LXD has been supported after Container Station 2.4

[Container Station] Docker Hub Registry

??

[Container Station] Container importing and exporting

??

[Container Station] Console mode

??

Linux Station

??

Notification: At least 4 GB RAM is required.

[Linux Station] Supports Ubuntu versions	18.04, and 20.04
Linux Station Center	??
QVR Pro	??

Note: At least 4 GB RAM is required. The maximum number of channels supported varies by NAS model, network configuration, and camera settings. For more information, visit <https://www.qnap.com/go/qvr-nas-selector>.

[QVR Pro] Recording Technique	Index database based
[QVR Pro] License Type	Perpetual
[QVR Pro] User-defined trigger events	??
[QVR Pro] Metadata	??
[QVR Pro] QVR Pro Client (Desktop)	Windows, macOS, and QNAP HybridDesk Station
[QVR Pro] QVR Pro Client (Mobile)	Android and iOS
[QVR Pro] Recording camera streams	H.264
[QVR Pro] Free built-in camera channels	8
QVR Elite	??

Note: At least 1 GB RAM is required. The maximum number of channels supported varies by NAS model, network configuration, and camera settings. For more information, visit <https://www.qnap.com/go/qvr-nas-selector>.

[QVR Elite] Recording Technique	Standard MP4 file based
[QVR Elite] License Type	Subscription-based
[QVR Elite] User-defined trigger events	??
[QVR Elite] QVR Pro Client (Desktop)	Windows, macOS, and QNAP HybridDesk Station
[QVR Elite] QVR Pro Client (Mobile)	Android and iOS
[QVR Elite] Recording camera streams	H.264
[QVR Elite] Free built-in camera channels	2
QVR Pro Client	??
[QVR Pro Client] Dynamic View Layout	??
[QVR Pro Client] Windows	??
[QVR Pro Client] Mac	??
[QVR Pro Client] HybridDesktop	??

[QVR Pro Client] iOS	??
[QVR Pro Client] Android	??
QVR Center	??

Note: At least 4 GB RAM is required.

[QVR Center] Log management	??
[QVR Center] Central monitoring across multiple servers	??
QVR Guard	??

Note: At least 4 GB RAM is required.

[QVR Guard] Failover design	??
[QVR Guard] Viewing task details	??
[QVR Guard] Automatic switch between Standby and Takeover modes	??
QVR Face	??

The maximum number of channels supported varies by NAS model, network configuration, and camera settings. For more information, visit <https://www.qnap.com/solution/qvr-face/en-us/>

QVR DoorAccess	??
----------------	----

## Nas Hardware Specs

CPU	AMD Ryzen™ Embedded V1500B 4-core/8-thread 2.2 GHz processor
CPU Architecture	64-bit x86
Graphic Processors	Optional via a PCIe adapter
Floating Point Unit	??
Encryption Engine	?? (AES-NI)
Hardware-accelerated Transcoding	Optional via a PCIe adapter
System Memory	8 GB SODIMM DDR4 (1 x 8 GB)
Maximum Memory	64 GB (2 x 32 GB)
Memory Slot	2 x SODIMM DDR4 Support ECC memory For dual-DIMM configurations, you must use a pair of identical DDR4 modules.
Flash Memory	5GB (Dual boot OS protection)
Drive Bay	6 x 3.5-inch SATA 6Gb/s, 3Gb/s
Drive Compatibility	3.5-inch SATA hard disk drives



Hot-swappable	2.5-inch SATA solid state drives ?? The following are not hot-swappable: M.2 SSDs, SSD cache drives, SSDs using PCIe expansion slots.
M.2 Slot	2 x M.2 2280 PCIe Gen3 x1 slots The M.2 SSD is not included as standard. M.2 SSD operations can easily generate excessive heat. It is recommended to install a heatsink (from <a href="#">QNAP</a> or a third-party provider) on the M.2 SSD.
SSD Cache Acceleration Support	??
GPU pass-through	??
2.5 Gigabit Ethernet Port (2.5G/1G/100M)	2(2.5G/1G/100M)
5 Gigabit Ethernet Port (5G/2.5G/1G/100M)	Optional via a PCIe adapter
10 Gigabit Ethernet Port	Optional via a PCIe adapter
Wake on LAN (WOL)	??
Jumbo Frame	??
PCIe Slot	2 Slot 1: PCIe Gen 3 x4 Slot 2: PCIe Gen 3 x4 Card dimensions for PCIe slot 1~Slot 2?200 x 111.15 x 18.76 mm / 7.87 x 4.38 x 0.74 inches. Wider cards can be installed if the next PCIe slot will not be used.
USB 3.2 Gen 2 (10Gbps) Port	3 x Type-A USB 3.2 Gen 2 10Gbps 1 x Type-C USB 3.2 Gen 1 5Gbps
HDMI™ Output	Optional via a PCIe adapter
Form Factor	Tower
LED Indicators	Status/Power, USB, LAN, Drive 1-6, M.2 SSD 1-2
Buttons	Power, Reset, USB Auto Copy
Dimensions (HxWxD)	180.2 × 264.3 × 279.6 mm Dimensions do not include foot pad (foot pad may be up to 30mm / 1.18 inches high depending on model)
Weight (Net)	6.4 kg
Weight (Gross)	7.3 kg
Operating Temperature	0 - 40 °C (32°F - 104°F)
Storage Temperature	-20 - 70°C (-4°F - 158°F)
Relative Humidity	5-95% RH non-condensing, wet bulb: 27°C

Power Supply Unit	(80.6°F) 250W, 100-240V AC, 50-60Hz, 3.5A
Power Consumption: Disk Standby Mode	21.891
Power Consumption: Operating Mode, Typical	45.898 W Tested with drives fully populated.
Fan	System fan: 2 x 92mm CPU fan: 1 x 60mm
System Warning	Buzzer
Kensington Security Slot	??
Max. Number of Concurrent Connections (CIFS) - with Max. Memory	2000
<b>Switch Hardware Specs</b>	
Management Type	Unmanaged
Number of Ports	5
2.5GbE (RJ45)	5
Power Supply Description	Adapter
Max. Power Consumption	12 W
Input Power Type	DC
Input Voltage Range	12V
MAC Address Table	16K
Total Non-Blocking Throughput	12.5Gbps
Switching Capacity	25Gbps
Fan	Fanless
Fanless	??
Supported Standards	IEEE 802.3 Ethernet IEEE 802.3u 100BASE-T IEEE 802.3ab 1000BASE-T IEEE 802.3bz 2.5GBase-T IEEE 802.3x Full-Duplex Flow Control
Form Factor	Desktop
LED Indicators	Per Port: Speed/Link/Activity Loop LED: Loop Per System: Power/Status
Dimensions (HxWxD)	34 x 180 x 145 mm
Weight (Net)	0.577 kg
Operating Temperature	0°C to 40°C (32°F to 104°F)
Relative Humidity	10% to 90% (non-condensing)
Certifications	FCC, CE, BSMI, VCCI, LVD, KCC, AS/NZ
Electromagnetic Compliance	Class B
Jumbo Frames	9K

Product Gallery

Dimensions & Weight



34 mm  
180 mm  
145 mm

34 x 180 x 145 mm  
H x W x D

1.27 pounds  
Net weight

Dimensions & Weight



7.09 in  
11.01 in  
10.41 in

7.09 x 10.41 x 11.01 inches  
H x W x D

14.11 pounds  
Net weight

**TS-673A + QSW-1105-5T**  
6-bay AMD Ryzen™ NAS with 5-Port 2.5G Switch



TS-673A

2.5 Gigabit Ethernet Port (2.5G/1G/100M) x2

Input Power (DC)

QSW-1105-5T

2.5GbE (RJ45) x5

Type-A USB 3.2 Gen 1 5K/1A 100bps x2

Type-C USB 3.2 Gen 1 5K/1A 50bps



Internet

Cable Modem

Wi-Fi 6 Router

QSW-1105-5T Switch

TS-673A NAS

2.5G Notebook

Gaming console

2.5G PC

**2.5GbE Connectivity**

Upgrade to a high-speed network and data storage center in your home or office, providing a full 2.5GbE network experience

